

# ChemiGlow™

Chemiluminescent substrate optimized for digital imaging systems

ChemiGlow chemiluminescent substrate from Alpha Innotech is the world's first chemiluminescent substrates optimized for CCD imaging technology with the Alpha Innotech FluorChem® Imaging Systems. ChemiGlow is available for Western blots for total flexibility.



## **ChemiGlow substrate is the world's first chemiluminescent substrate optimized for CCD digital imaging systems.**

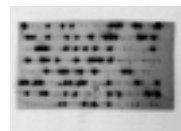
ChemiGlow substrate has been optimized for superior performance with Alpha Innotech imaging systems by providing unequalled performance compared to film, which saves time and money by providing high dynamic range digital images at a fraction of the cost of film.

## **ChemiGlow substrate delivers exceptional signal at an exceptional price!**

- Process more samples with the same amount of substrate.
- Get more from your reagent budget.
- Get more signal with less background.
- Save money on film by using the FluorChem imaging system for digital image capture and inexpensive thermal hard copy print outs in just seconds!

## **ChemiGlow substrate is ideal for the MovieMode™ function of FluorChem imaging system**

- Multiple user-defined exposures are automatically captured with a single button click.
- Saves time and money by avoiding multiple film use.

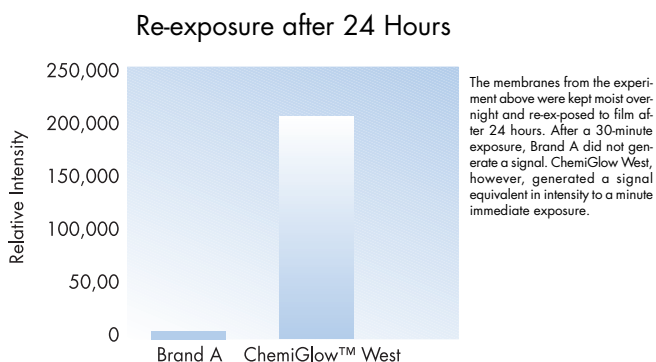
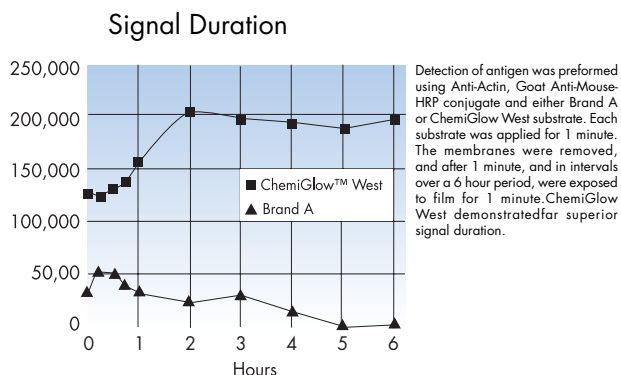


Which image do you prefer?

# ChemiGlow™

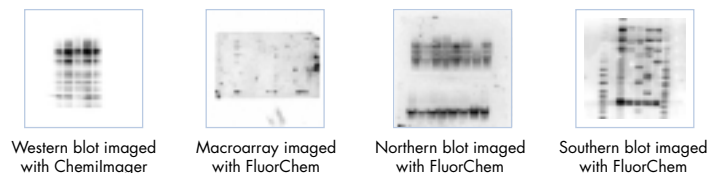
## ChemiGlow substrate generates long lasting light emissions, giving you flexibility.

- Multiple, long exposures are possible without signal decay.
- Prepare and process samples in batches and simultaneous exposures for improved experimental consistency.



## ChemiGlow substrate is available in flexible versions for all of your chemiluminescence imaging needs.

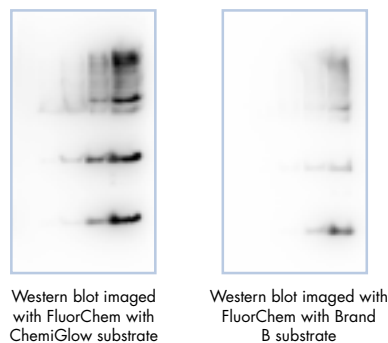
ChemiGlow West substrate for Westerns and chemiluminescent plate assays based on HRP.



## ChemiGlow substrate provides unsurpassed performance with the highest sensitivity.

No other substrate delivers this exceptional level of sensitivity and performance.

Using ChemiGlow substrate, femtogram detection levels are possible.



Duplicate Western blots were prepared and detected utilizing ChemiGlow West Substrate and an acridan-based HRP substrate (Brand B). Under the conditions of the blots (.5ug/ml of the primary antibody, Rat anti-Mouse IL-2 and 3.33 ng/ml of the secondary antibody, Goat anti-Rat IgG HRP), detection was rapidly captured with a 1 minute exposure to the FluorChem™ CCD imaging system. ChemiGlow West substrate detected down to 62.5 femtogram of IL-2 where Brand B could only detect 1 ng of IL-2.

## Ordering Information

**Cat #** CGW-8000  
**Description** ChemiGlow West Substrate (100ml)  
Contents: ChemiGlow West Luminol/Enhancer Solution, 50ml, ChemiGlow West Stable Peroxide Solution, 50 ml.  
This kit contains sufficient substrate for 800 cm<sup>2</sup> of blotting membrane. \*Patent pending.  
Stable for 1 year at room temperature. For long-term storage, keep product at 4°C.  
ChemiGlow West substrate's light emission wavelength is 425 nm.

Visit the AIC website at [www.alphainnotech.com](http://www.alphainnotech.com) to order ChemiGlow substrate on-line



2401 Merced St., San Leandro, California 94577 • Email: [info@aicemail.com](mailto:info@aicemail.com) • Web Site: <http://www.alphainnotech.com>  
Phone: 510-483-9620 • Customer Service: 800-795-5556 • Fax: 510-483-3227 • Tech Support: 800-795-5556